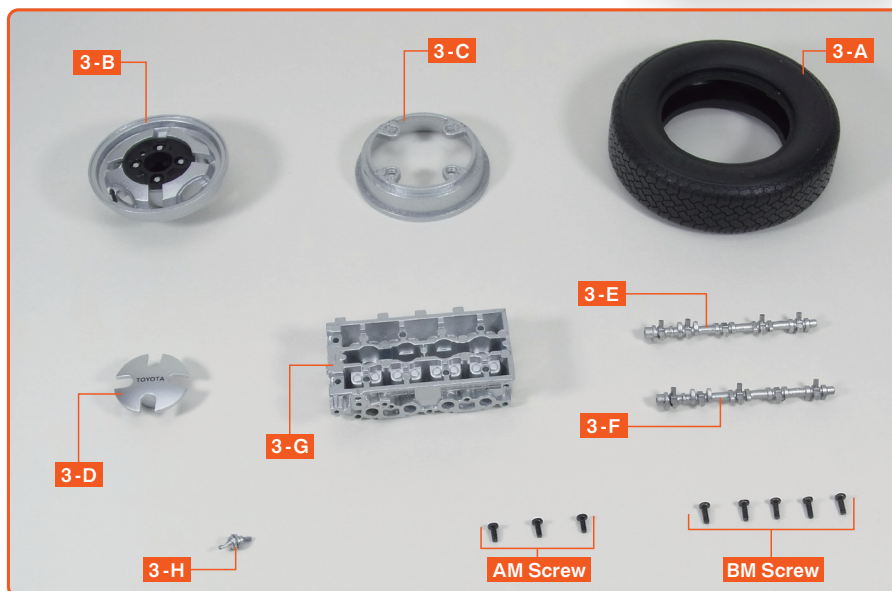


Issue 3

Attach the wheel rims to the front and back of the tires, and set the two camshafts of the 4A-GEU engine into the cylinder head.



Assemble the Front Wheel and Set the Camshafts



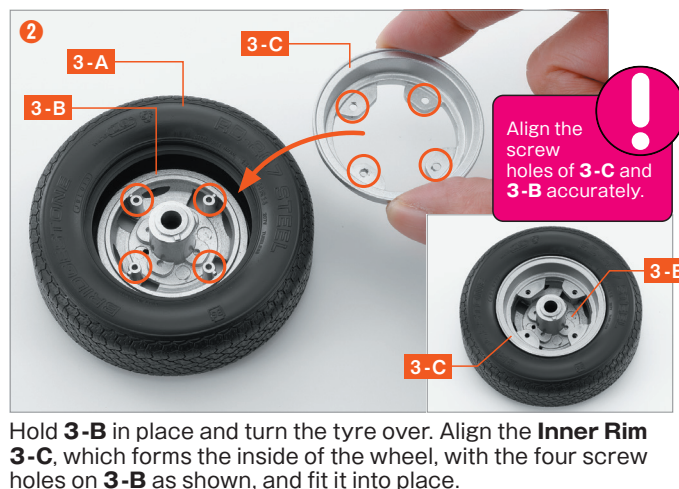
※ In this guide "Left" or "(L)", and "Right" or "(R)", refer to the direction as viewed from the driver's seat.

3-A	Tyre
3-B	Outer Rim
3-C	Inner Rim
3-D	Rim Cap
3-E	Camshaft (L)
3-F	Camshaft (R)
3-G	Cylinder Head
3-H	Actuator
AM Screw	(1.7×4mm)×3 (1Spare)
BM Screw	(1.7×3mm)×5 (1Spare)

View the follow-along video



step 1 Attach the Wheel Rims to both sides of the Tyre



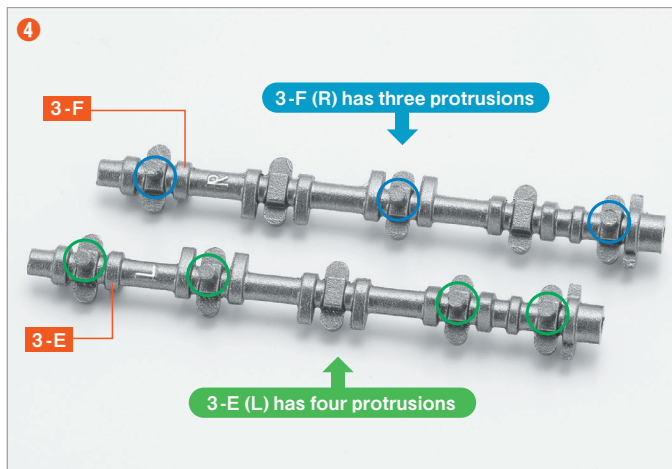


Tightening the Wheel Screws

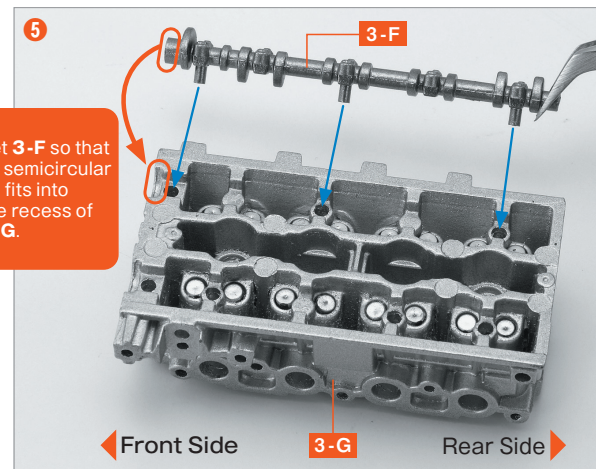
In step 1, the wheel rim is secured with four screws. In this kind of case, rather than fully tightening each screw one by one, the trick is to first fasten them lightly in a diagonal sequence: screw ①, then the screw opposite to it ②, then the adjacent screw ③ and finally the screw opposite to that ④. After checking the overall balance, firmly tighten each screw again in the same diagonal order. This is the same method used when changing the tires on a real car.



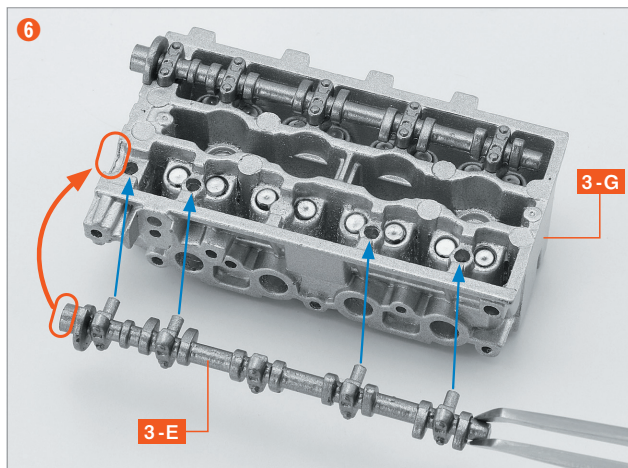
step 2 Set the Camshafts into the Cylinder Head



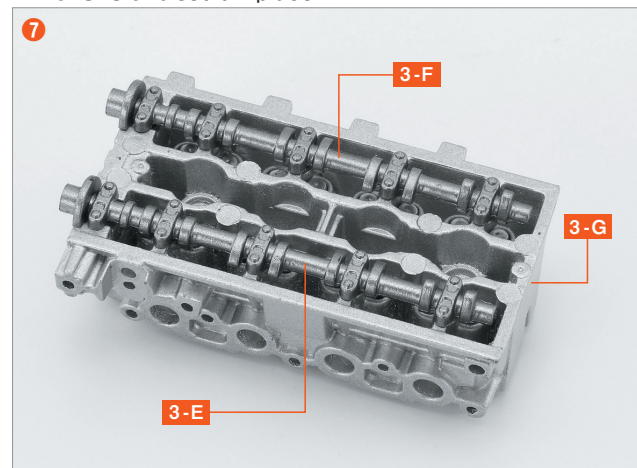
First, check the shapes of the left and right camshafts. As shown, the **Camshaft** marked "R" (**3-F**) has three protrusions, while the **Camshaft** marked "L" (**3-E**) has four protrusions.



Align the three protrusions of **3-F** with the three **Cylinder Head 3-G** holes as shown. Ensure the semicircular end of **3-F** fits the recess in the front edge of **3-G** and set it in place.

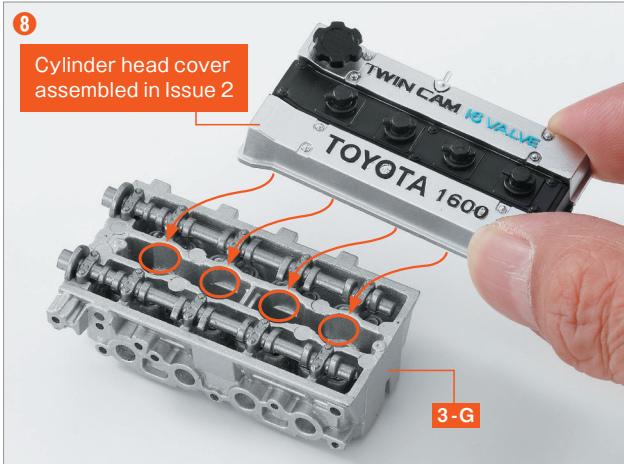


Align the four protrusions of **3-E** with the four holes in **3-G**, and set it in place just as in step 5, making sure that the semicircular tip fits into the recess of **3-G**.

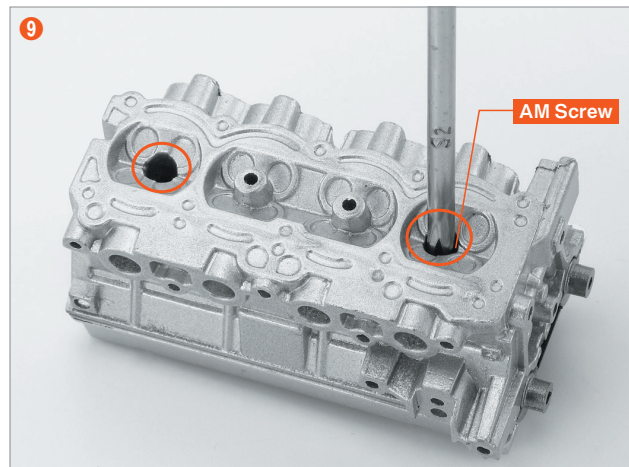


With the two camshafts installed in the cylinder head of the 4A-GEU engine, the twin-cam structure is recreated.

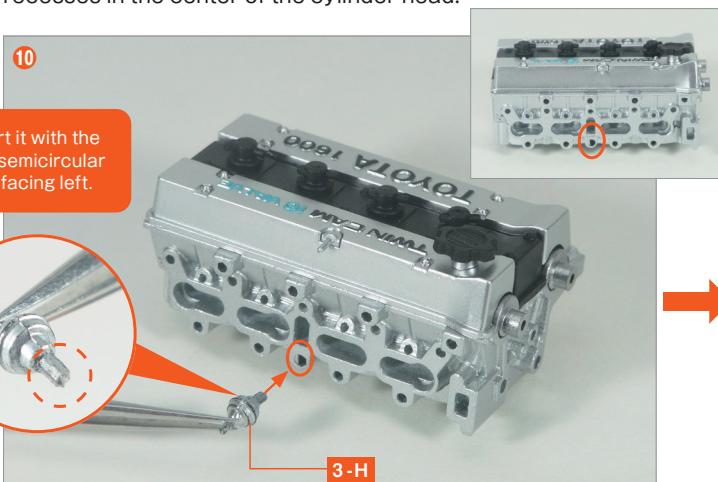
step 3 Securing the Cylinder Head Cover to the Cylinder Head



Hold the cylinder head cover assembled in Issue 2 as shown, and align the four pins on the back with the four recesses in the center of the cylinder head.



Turn the assembly from step 8 over, and secure it at the two positions using **AM screws** as shown.



With the Cylinder Head upright, insert the **Actuator 3-H**, aligning the semicircular end of its thicker pin with the same shape hole as circled (O).



Complete

The assembly for Issue 3 is complete. The left front wheel and part of the engine head have been completed. Keep the Rim Cap (3-D) safely to prevent losing it, as it will be used in a later issue. In Issue 4, we will assemble the structural parts of the suspension and the intake manifold.

